

# ST JOHN'S CHURCH OF ENGLAND (VA) FIRST SCHOOL

"Together we will give our children  
the roots to grow, and the wings to fly"

Christchurch Street East,  
Frome, Somerset BA11 1QG

t: 01373 462251

w: [stjohnsfrome.co.uk](http://stjohnsfrome.co.uk)

e: [office@stjohnsfrome.co.uk](mailto:office@stjohnsfrome.co.uk)

Headteacher: Mrs Teresa Gilbert

6 July 2023

Dear Parents and Carers,

At the end of last half term (May 2023), we asked you to provide feedback, via an online survey, to let us know what is working at St John's school and what areas need improvement. Since 2021 we have been conducting an annual survey, providing an opportunity for parents and carers to feedback their thoughts and experience with St John's First school ([2022](#) and [2021](#) feedback). We have communicated annually how we think we have addressed some of the feedback so that *together we will give our children the roots to grow, and the wings to fly*.

Areas for improvement from the 2021/22 survey included providing clearer feedback on how children are doing. In response to this we hosted in person 'Stay and Learn' sessions at school for reception children, and 'Share My Work' sessions for Years 1 to 4. We hosted virtual (October 2022) and in person parents' evenings (March 2023) where teachers and parents/carers discussed their children's academic progress and attainment expectations for the end of the year. We held curriculum information sessions for parents at the start of every term as well as other information sessions throughout the year, such as phonics information sessions for the Reception parents, Year 1 phonics check, Year 2 SATs and Life Bus information sessions linked to Personal, Social, Health and Economic education ([PSHE](#)). We're happy to see that this year's feedback scored highly on Q5: The school makes me aware of what my child will learn during the year and Q10. The school lets me know how my child is doing.

Thank you so much to everyone who took time to provide feedback. We had a fantastic response rate to our survey with 171 responses (70%), significantly higher than the 131 responses from last year – we really appreciate your time and input! We are delighted to see that 95% of respondents would recommend St John's CE VA First School, Frome to another parent. 99% of respondents agreed that the school makes them aware of what their child will learn during the year; 98% said their child feels safe at our school and 97% said that their child feels happy at our school.

It has been a busy and transitional year for the school with [SIAMS](#) and [Ofsted](#) inspections in February 2023 and Mrs Gilbert starting as our new Headteacher in the summer term. We are looking forward to building stronger relationships between the school, parents, carers, and governors in the coming academic year, 2023/24, and incorporating your feedback. If you have any issues or concerns about your child, please do arrange a meeting with Mrs Gilbert to discuss further.

Yours faithfully,

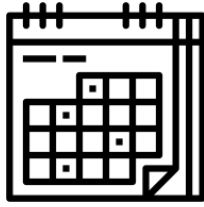
The Governing Board



At St John's CE VA First School the health, safety and wellbeing of every child is our top priority. We expect all staff, governors, parent/carers and visitors to share this commitment to safeguarding our pupils.

## Highlights

The following analysis shows the combined percentage of the top *strongly agree* and *agree* answers. Full disaggregated results are available at the end of this report. When *strongly agree* and *agree* answers were combined, 11 of the 19 questions scored over 90%. The following 7 responses received over 95%. Last year the top three responses were: my child feels safe at school (98%); my child feels happy at school (98%) and my child can take part in clubs and activities at this school (94%).



**99%**

Q5: The school makes me aware of what my child will learn during the year



**98%**

Q2: My child feels safe at this school



**97%**

Q1: My child feels happy at this school



**97%**

Q12: My child can take part in clubs and activities at this school



**95%**

Q9: My child does well at this school.



**95%**

Q10: The school lets me know how my child is doing.



**95%**

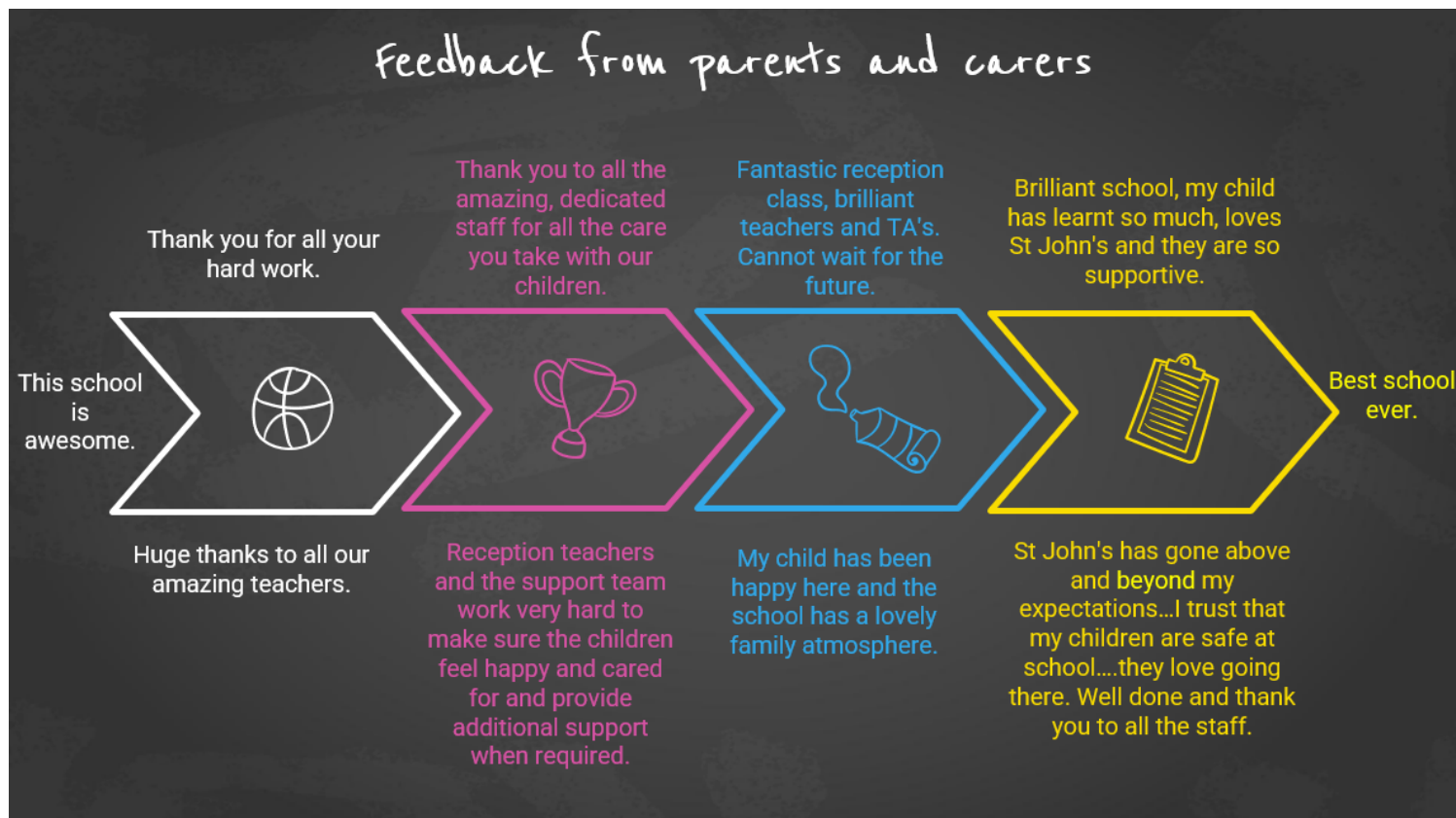
Q19: I would recommend this school to another parent.



At St John's CE VA First School the health, safety and wellbeing of every child is our top priority. We expect all staff, governors, parent/carers and visitors to share this commitment to safeguarding our pupils.

## Strengths

We received additional written comments and feedback - below is a selection of positive responses.



At St John's CE VA First School the health, safety and wellbeing of every child is our top priority. We expect all staff, governors, parent/carers and visitors to share this commitment to safeguarding our pupils.

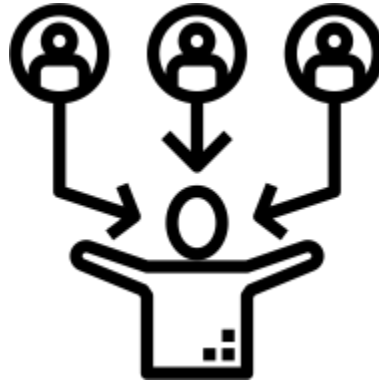
## Areas for improvement

The following questions received the highest overall response when *strongly disagree* and *disagree* were combined.



7%

Q17. The school is well-led and managed.



7%

Q14. The school gives clear feedback on how my child is doing.



7%

Q8. The school has high expectations for my child.

Comparatively, the top three response in 2021/22 were:

- Q10. The school lets me know how my child is doing (14%)
- Q14. The school gives clear feedback on how my child is doing (14%)
- Q8. The school has high expectations for my child (8%)

The main areas for improvement in the comments section of the survey were:

- Improved, clear and timely communication from the school – information could come out earlier and parents could be reminded about events, so they have more time to prepare.
- Improved outdoor play area and use of outdoor space.
- Stronger links between school, parents, and local community.
- Improved SEND provision. 45% of respondents whose child has SEN *strongly agreed* or *agreed* that the school gives them the support they need to succeed; 5% *disagreed* or *strongly disagreed*; 50% said they *don't know*.



## Overview of results

|   | Strongly agree | Agree | Disagree | Strongly disagree | Don't know | n/a | No  | Yes |
|---|----------------|-------|----------|-------------------|------------|-----|-----|-----|
| 1. My child is happy at this school.  | 51%            | 46%   | 2%       | 0%                | 1%         | 0%  |     |     |
| 2. My child feels safe at this school.  | 49%            | 50%   | 1%       | 0%                | 1%         | 0%  |     |     |
| 3. The school makes sure its pupils are well behaved  | 26%            | 63%   | 6%       | 1%                | 4%         | 0%  |     |     |
| 4. My child has been bullied and the school dealt with the bullying quickly and effectively.  | 5%             | 18%   | 5%       | 1%                | 9%         | 62% |     |     |
| 5. The school makes me aware of what my child will learn during the year.   | 43%            | 56%   | 1%       | 0%                | 1%         | 0%  |     |     |
| 6. When I have raised concerns with the school they have been dealt with properly.  | 25%            | 45%   | 5%       | 1%                | 2%         | 21% |     |     |
| 7a. Does your child have special educational needs and/or disabilities (SEND)?  | 0%             | 0%    | 0%       | 0%                | 0%         | 0%  | 84% | 16% |
| 7b. My child has SEND, and the school gives them the support they need to succeed.  | 13%            | 32%   | 2%       | 3%                | 50%        | 0%  |     |     |
| 8. The school has high expectations for my child.   | 18%            | 62%   | 7%       | 0%                | 14%        | 0%  |     |     |
| 9. My child does well at this school.   | 35%            | 61%   | 4%       | 0%                | 1%         | 0%  |     |     |
| 10. The school lets me know how my child is doing.  | 30%            | 62%   | 6%       | 0%                | 2%         | 0%  |     |     |
| 11. There is a good range of subjects available to my child at this school.   | 30%            | 64%   | 3%       | 0%                | 3%         | 0%  |     |     |
| 12. My child can take part in clubs and activities at this school.  | 42%            | 56%   | 2%       | 0%                | 1%         | 0%  |     |     |
| 13. The school supports my child's wider personal development.  | 29%            | 58%   | 3%       | 0%                | 10%        | 0%  |     |     |
| 14. The school gives clear feedback on how my child is doing.   | 48%            | 44%   | 7%       | 0%                | 1%         | 0%  |     |     |
| 15. The school is a welcoming and inclusive community that fosters and encourages family-wide participation in all aspects of school life.  | 30%            | 58%   | 4%       | 0%                | 8%         | 0%  |     |     |
| 16. The staff, parents and governors of St John's work together to ensure that the children are 'given the roots to grow and the wings to fly' - this includes aspirational learning of a broad and balanced curriculum in a nurturing environment, inclusive of all, and rooted in our distinctive Christian values. | 24%            | 69%   | 2%       | 0%                | 5%         | 0%  |     |     |
| 17. The school is well-led and managed.   | 28%            | 59%   | 7%       | 0%                | 7%         | 0%  |     |     |
| 18. My child enjoys coming to school.   | 41%            | 54%   | 4%       | 1%                | 0%         | 0%  |     |     |
| 19. I would recommend this school to another parent.  |                |       |          |                   |            |     | 5%  | 95% |



At St John's CE VA First School the health, safety and wellbeing of every child is our top priority. We expect all staff, governors, parent/carers and visitors to share this commitment to safeguarding our pupils.